



SWARTHMORE PRESBYTERIAN CHURCH

Alternative Christmas Shop

727 HARVARD AVENUE, SWARTHMORE, PA 19081
610.543.4712 WWW.SWARTHMOREPRES.ORG

Give hope around the world

November, 2017

Dear Friends,

The Alternative Christmas Shop (ACS) is a joyous way to celebrate the true spirit of the holiday! During the pre-Christmas season, Swarthmore Presbyterian Church offers shoppers an opportunity to choose meaningful gifts while providing help to others, both near and far.

With a wide range of charities from all over the world, you will find something for everyone on your list. If you prefer to support local charities, you can help provide housing for a refugee family sponsored by SPC, supply a safe sleeping place for a North Philadelphia newborn, or give a juvenile offender a chance to rebuild his life through education. If your gift recipients have a national or global view, they may appreciate gifts that benefit people in need, from the Navajo reservation to Uganda, from Nicaragua to Syria, from veterans to hungry schoolchildren. The nature-lovers on your list are sure to appreciate gifts that help endangered gorillas in Africa and threatened polar bears in the Arctic. You will find many worthy options!

The shop will be open in Fellowship Hall immediately following worship for four Sundays, beginning November 26. Enjoy holiday music, delicious cookies and the best Christmas shopping experience around! ACS committee members will be on hand to answer questions about any of the gift offerings.

Please review the wonderful variety of shopping options here, consider what might appeal to each person on your Christmas list, and bring your completed form to the Alternative Christmas Shop. Cashiers will fill your order while you wait and provide you with lovely gift cards for your recipients, detailing the specific gifts made in their honor.

You may also mail or bring your shopping list (along with your check) to the church office. Gift cards will be available the following Sunday at the shop or can be mailed to you directly.

Thank you for including ACS as part of your holiday giving.

Grace and Peace,

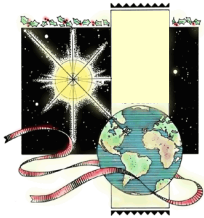
THE 2017 ALTERNATIVE CHRISTMAS SHOP COMMITTEE:

*Barbara Blake, Suellen Butler, Jodi Dawes, Jim Dicker, Mandy Dicker, Betsy Ffrench,
Abby Finney, Bob Hall, Charlotte Hall, Nancy Jones, Jim Lappen*

SUNDAYS, NOVEMBER 26 & DECEMBER 3, 10, & 17

11:15AM IN FELLOWSHIP HALL

Give Hope Around the World



SWARTHMORE PRESBYTERIAN CHURCH

Alternative Christmas Shop

2017 SHOPPING LIST

No.	PROJECT	LOCATION	DESCRIPTION	GIFT	PRICE	QTY.	TOT.
VETERANS & SERVICE PEOPLE							
1	Bringing Them Home <i>Fisher House for Families of the Fallen</i> http://fisherhouse.org	Dover Air Force Base, DE	Provides housing for grieving families whose loved ones have made the ultimate sacrifice for their country.	One night of lodging for a grieving family	\$10.00		
2	Veterans Village <i>Veterans Community Project</i> http://veteranscommunityproject.org/	Greater Kansas City Area	Fulfills needs of homeless veterans by building a tiny-home community with transitional services.	A bed in a veteran's tiny home	\$25.00		
3	K9s for Warriors http://K9sforwarriors.org	USA	Provides service dogs for post-9/11 veterans struggling with PTSD or other trauma.	Training session in a public place for a Warrior and dog	\$15.00		
EMPOWERMENT & SOCIAL JUSTICE							
4	A Home for Refugees <i>Swarthmore Presbyterian Church</i> http://swarthmorepres.org/outreach/#globaloutreach	Delaware County PA	Working with Church World Service, provides a home and other services for a refugee family.	1 day of rental housing 1 week of rental housing	\$50.00 \$350.00		
5	A Chance for African Girls <i>Campaign for Female Education (Camfed)</i> http://camfed.org	Rural sub-Saharan Africa	Supports education for girls in sub-Saharan Africa with tuition fees, uniforms and books.	One month's school tuition	\$20.00		
6	Rebuilding Young Lives <i>Youth Sentencing and Reentry Project</i> https://lysrp.org	Philadelphia	Advocates for youthful offenders and provides support as they rebuild their lives.	An SAT/ACT study guide for an incarcerated youth	\$15.00		
7	Sewing Seeds of Entrepreneurship <i>SPC's partner communities in Nicaragua</i> http://cepadnica.org	Nicaragua	Provides sewing kits for a class teaching Nicaraguan women a marketable skill.	One sewing kit	\$5.00		
8	Campaign for Youth <i>Presbytery of Philadelphia</i> https://presbyphl.org/300-mission-campaign/	Philadelphia Area	Supports Philadelphia Presbytery's 300 th anniversary campaign to disrupt the school-to-prison pipeline for youth.	Support for 8 mission partners in their work with at-risk youth	\$30.00		
9	Legal Lift for Immigrants <i>Pennsylvania Immigration Resource Center</i> http://pirclaw.org	York PA.	Provides access to justice for immigrants in detention and in the community through legal services.	Materials for a legal workshop for 10 to 15 immigrants	\$25.00		
HEALTH & WELFARE							
10	Adopt a HeroRAT <i>Apopo</i> http://support.apopo.org	Asia Africa Latin America	Provides training for African giant pouched rats to detect landmines left by warfare.	One month of food, training and health care for a HeroRat	\$10.00		
11	Farm to Families <i>Temple University</i> http://giving.temple.edu/farmtofamilies	Philadelphia	Provides fresh produce and education to low-income families to reduce diet-related disease.	A week of fresh produce and cooking demonstration	\$25.00		
12	Well-Being for All <i>Ryan's Well Foundation</i> http://ryanswell.ca	Uganda	Provides access to clean water, sanitation and hygiene education in Africa and Haiti.	Tools to build or maintain a well in rural Uganda	\$30.00		
13	Weaving Hope for Elders <i>Adopt-a-Native-Elder-Program</i> http://www.anelder.org	Navajo reservations AZ and UT	Enables Navajo Elders, many poor, to live in their traditional homes and culture.	Yarn for weaving a traditional Navajo rug	\$30.00		
14	Medicine on the Move <i>Syrian American Medical Society</i> http://sam-usa.net/syria	Syria	Brings mobile clinics to patients in rural areas who cannot get to medical facilities.	Treatment for one patient at a mobile clinic	\$10.00		
15	Fix-It for Seniors <i>Habitat for Humanity Montco and Delco County</i> http://habitatmontco.org	Montgomery County, PA	For homeowners over 65, provides repairs for critical needs that may threaten health, safety or accessibility.	A share in the cost of repairing a roof	\$20.00		

Give hope around the world.

Alternative Christmas Shop

No.	PROJECT	LOCATION	DESCRIPTION	GIFT	PRICE	QTY.	TOT.
CHILDREN & EDUCATION							
16	Baby Box <i>Temple University Hospital</i> http://giving.temple.edu/babybox	Philadelphia	Provides a bassinet and supplies to keep newborn babies safe and prevent infant mortality.	A Baby Box with mattress, sheets, blankets, & diapers	\$35.00		
17	Blessings in a Backpack <i>Blessings in a Backpack</i> http://blessingsinabackpack.org	Chester PA	Provides food on Friday to schoolchildren who otherwise might not eat over the weekend.	6 hunger-free weekends for a child	\$15.00		
18	Healing Palestinian Children <i>East Jerusalem YMCA Rehabilitation Program</i> http://www.ej-ymca.org/rehab/en/	East Jerusalem and the West Bank, Palestine	Provides physical and psychosocial rehabilitation to Palestinian children affected by West Bank violence.	Rehabilitation equipment for a Palestinian child affected by violence	\$25.00		
19	Big Lunch at the Little School <i>La Escuelita (The Little School, CEPAD)</i> http://littleschoolnicaragua.com	Managua, Nicaragua	Provides a hot lunch for one day for the 150 students at the Little School.	One day's lunch for the Little School	\$20.00		
20	Keeping Families Close <i>Ronald McDonald House, Philadelphia</i> http://philarmh.org	Philadelphia	Supports families of seriously ill children by creating a community of comfort and hope.	One night stay at the house for the family of a sick child	\$15.00		
21	Dressed for School <i>Presbyterian Mission Agency</i> DRC mission partner Gwenda Fletcher	Democratic Republic of Congo (DRC)	Provides school uniforms for Congolese girls in the country's merit scholarship program.	One school uniform for a girl	\$20.00		

ANIMALS & ENVIRONMENT							
22	Baby Food for Baby Gorillas <i>Gorilla Doctors</i> http://gorilladoctors.org	Central Africa: Rwanda, Uganda, DRC	Provides medical care for four critically endangered gorilla orphans: Ndakasi, Ndeze, Yalala and Matabishi.	Formula for a baby gorilla for a week	\$10.00		
23	Polar Bears on Thin Ice <i>Polar Bears International</i> https://polarbearsinternational.org	USA	Uses research and education to illuminate the effects of climate change on polar bear survival.	Free educational materials for teachers	\$5.00		

PLEASE PROVIDE THE INFORMATION REQUESTED BELOW. IF MAILING, PLEASE INCLUDE ENTIRE SHOPPING LIST.
Gift cards will be mailed within a week of receiving your order.

GIFTS TOTAL	_____
mail fee	+ \$2.00
TOTAL:	_____

Check to indicate your gift card preference:

I do not need gift cards. I will pick up my cards (at the church office or at ACS). Please mail my gift cards (\$2.00 charge).

Please print:

NAME: _____ PHONE _____ E-MAIL _____

STREET ADDRESS _____

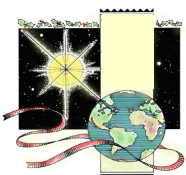
CITY, STATE, ZIP _____

Cash Check enclosed Check sent via online banking

Please make your check payable to Swarthmore Presbyterian Church, indicating ACS in the memo section.
Credit card payments are accepted in the shop on Sunday mornings, but at this time cannot be processed through our website.

To make arrangements for credit card payment by phone, check here:
We will contact you as soon as we receive your completed shopping list.

MAIL TO:
Swarthmore Presbyterian Church,
727 Harvard Avenue, Swarthmore, PA 19081



Thank You